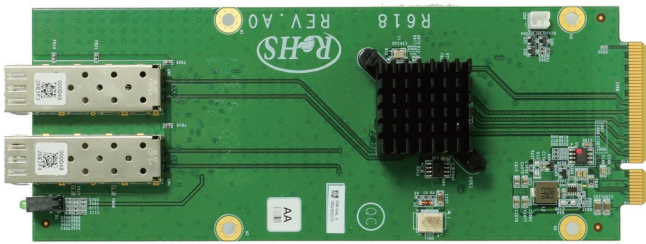


# R618

## Network Expansion Module



### ► Features

- 1x Intel® I350-AM2
- 2x 1GbE SFP Ports
- Support VMDq, SR-IOV



### ► Introduction

AEWIN R618 Network Expansion Module is built upon the venerable Intel® I350-AM2 chipset, featuring 2x 1GbE SFP ports. SR-IOV functionality is enabled to offer DMA access for virtual machines.

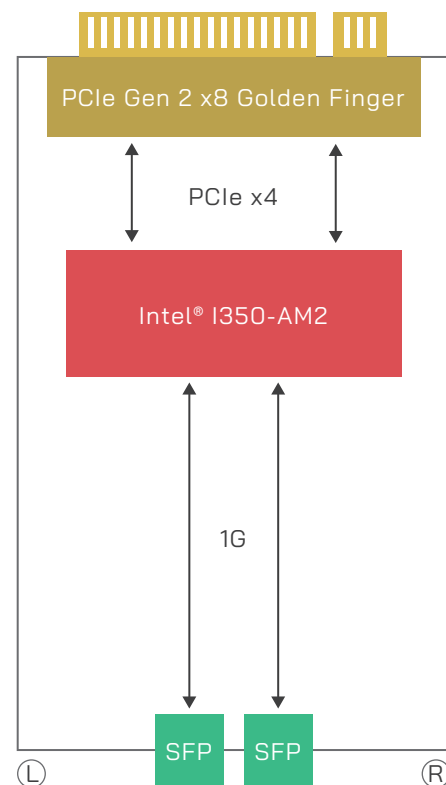
### ► Specification

Platform	
Form Factor	AEWIN Expansion Module
LAN Controller	1x Intel® I350-AM2
LAN Switch	-
Features	VMDq, SR-IOV
Ethernet Port	2x 1GbE SFP Ports
Bypass	-
Bus Type	PCIe Gen 2 x8
Mechanical	
Dimension(W x D x H): 74 x 194 x 29 mm	
Weight(with tray): 290g	
Weight(without tray): 100g	
Environmental	
Operating Environment	Temperature: 0-45°C(32-113°F) Humidity: 20-90% RH
Storage Environment	Temperature: 0 -70°C(14-158°F) Humidity: 5-95% RH @ 55°C
OS Support	Windows, Linux, FreeBSD

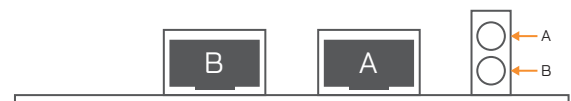
### ► Order Information

R618A	1x Intel® I350-AM2, 2x 1GbE SFP Fiber, Ports Sequence Right to Left
R618AL	1x Intel® I350-AM2, 2x 1GbE SFP Fiber, Ports Sequence Left to Right

### ► Block Diagram



### ► LED



LED	State	Description
LAN LED (LNK/ACT)	Green <span style="color: green;">■</span>	Link: Always on Active: Blinking