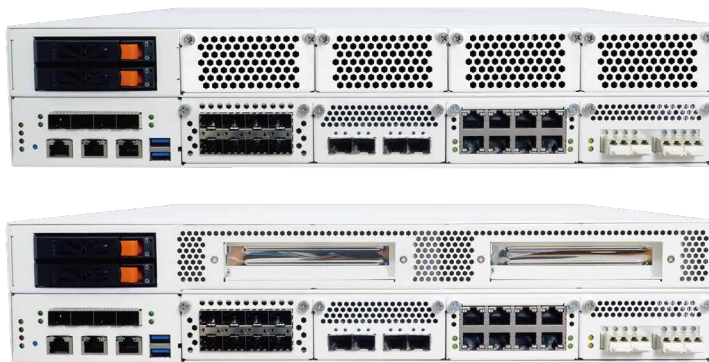


# SCB-1921

Performance Network System

## AWIN Technologies Co., Ltd.

2U Rack-Mount Edge Computing Server featuring Dual 2nd Gen Intel Xeon Scalable Processors with Intel C620 series PCH. Supporting DDR4 memory up to 2933MHz, 4x half-height PCIe x8 (for 4x T4) or 2x full-height PCIe x16 front access expansion slots, 4x PCIe x8 Network Expansion Module, 2x 2.5" SATA HDD/SSD with Hot-Plugging, IPMI, 2x USB 3.0, 2x 1GbE, 1x Console, 1x CF, 1x mSATA, 1x M.2, Redundant PSU



### Features

- Support Dual 2nd Gen Intel Xeon Scalable Processors
- Support 2933MHz System Memory
- 4x PCIe x8 for Network Expansion Module, plus 4x PCIe x8 or 2x PCIe x16 for GPU or FPGA

## Introduction

The SCB-1921 is a 2U Rack-Mount high-performance edge computing system, supporting 2x 2nd Gen Intel Xeon Scalable Processors including Skylake & Cascade Lake Processors with Intel® C624 PCH (codenamed Lewisburg). The new generation platform provides high performance with CPU up to 28 cores, AVX-512 instructions, and Ultra Path Interconnect (UPI) up to 10.4 GT/s.

The SCB-1921 supports total 12 channels DDR4 RDIMM (up to 2933MHz). With 64 PCI Express lanes, up to 4x NVIDIA T4 or other HHL expansion cards can be installed or optionally 2x full-height PCIe x16 slots.

The strong IO elements of SCB-1921 include two management Ethernet port (one for management, another for option IPMI function), a console port, 2x USB 3.0 ports, LEDs for power/ HDD/ 2x GPO. In addition, the SCB-1921 also supports 2x 2.5" SATA HDD/SSD with Hot-Plugging and onboard CompactFlash™/ m-SATA/ M.2 slot for basic network storage application.

## Specifications

### ▼ Processor System

<b>CPU</b>	Support Dual 2nd Generation Intel® Xeon® Scalable Processors, Socket P, LGA3647
<b>Chipset</b>	Intel® Lewisburg C624 PCH
<b>System Bus</b>	UPI up to 10.4 GT/s
<b>BIOS</b>	AMI® UEFI BIOS

### ▼ Memory

<b>Technology</b>	Total 24 DIMMs(6x channels per CPU, 2x DIMMper channel,12x DIMMs per CPU) 1.ECC & Registered : DDR4 2666/2933MHz memory,up to 32GB per DIMM 2.LRDIMM : DDR4 2666/2933MHz, up to 32GB per DIMM
-------------------	---

<b>Capacity</b>	ECC RDIMM : up to 768GB LRDIMM : up to 768GB
-----------------	---

### ▼ Expansion

<b>Expansion Slots</b>	-1x SO-DIMM slot for IPMI card with VGA support -4x PCIe(x8) slots for NIC module -4x half-height PCIe x8 (for 4x T4) or 2x full-height PCIe x16 -1x PCIe(x8) slot for Standard PCIe card
------------------------	--

### ▼ I/O

<b>USB</b>	2x external USB 3.0 port 1x internal USB 3.0 pin header
<b>Serial</b>	1x RJ45 Console port (COM1) 1x internal 5x2 pin header (COM2)

### ▼ Ethernet

<b>GbE Ethernet</b>	2x 1GbE RJ45 ports
---------------------	--------------------

### ▼ Storage

<b>SATA</b>	Support 2x 2.5" SATA HDD or SSD
<b>mSATA</b>	1x mSATA socket
<b>CompactFlash Socket</b>	1x CompactFlash™ Type II (Optional)
<b>M.2</b>	1x M.2 2280 socket

### ▼ Power Supply

<b>Watt</b>	Redundant 800W Power Supply
-------------	-----------------------------

### ▼ Mechanical and Environment

<b>Form Factor</b>	2U rack-mount
<b>LED</b>	1x Power LED (Green) 1x HDD LED (Red) 1x Status LED (Green/Yellow via programmable GPIO)
<b>Dimension (W x D x H)</b>	440mm (W) x 708mm (D) x 88mm (H) (17.3"W x 27.8"D x 3.4"H)
<b>Operating Temperature</b>	Operating: -5 ~ 50°C ( 23 ~ 122°F )
<b>Storage Temperature</b>	-45 ~ 75°C (-49 ~ 167°F)
<b>Humidity</b>	10 ~ 85% relative humidity, non-operating, non-condensing
<b>Weight</b>	19kg/41.9lbs
<b>Certification</b>	CE/FCC

**▼ Packing List**

- 1x SCB-1921 unit
- 2x power cord
- 1x CD (Manual, Quick Installation Guide, Utility Driver)

**I/O Mechanical Layout**